



**EUROPEAN SEA PORTS ORGANISATION** ASBL / VZW  
**ORGANISATION DES PORTS MARITIMES EUROPEENS** ASBL / VZW

# **EU policy agenda and ESPO initiatives on port environmental management and sustainability**

**Green Ports; environmental protection, intelligent energies and sustainable mobility in the port and coastal contexts, Genoa, 29 November 2012**

**Dr Antonis Michail, Policy Advisor, ESPO**



**EUROPEAN SEA PORTS ORGANISATION** ASBL / VZW  
**ORGANISATION DES PORTS MARITIMES EUROPEENS** ASBL / VZW

# Content

- 1. ESPO and the environment**
2. EU policy agenda
3. ESPO initiatives
4. Conclusions



EUROPEAN SEA PORTS ORGANISATION ASBL / VZW  
ORGANISATION DES PORTS MARITIMES EUROPEENS ASBL / VZW

# European Sea Ports Organisation

- ★ Founded in 1993
- ★ Represents European seaport authorities
- ★ Members from EU and neighbouring countries
- ★ Secretariat in Brussels
- ★ Recognised counterpart of EU institutions
- ★ A lobby and a knowledge network



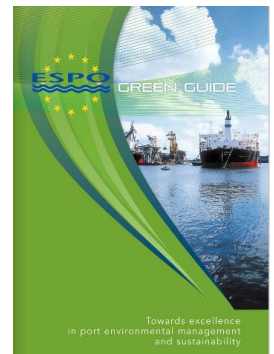
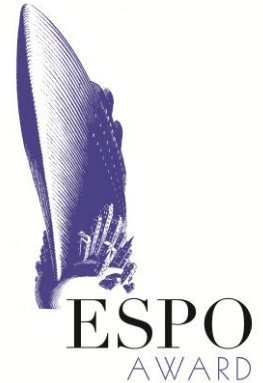


EUROPEAN SEA PORTS ORGANISATION ASBL / VZW  
ORGANISATION DES PORTS MARITIMES EUROPEENS ASBL / VZW

# ESPO & the Environment

Encouraging ports to be **proactive in protecting the environment** by:

- ★ Preparing recommendations on environmental management
- ★ Drafting guidelines on specific issues (e.g. nature protection)
- ★ Raising awareness and disseminating information
- ★ Accommodating networking and exchange of good practices







EUROPEAN SEA PORTS ORGANISATION ASBL / VZW  
ORGANISATION DES PORTS MARITIMES EUROPEENS ASBL / VZW

# Port of Genoa – ESPO Award winner 2012!

“Citizens of the Port – Knowing and Living the Port of Genoa”





EUROPEAN SEA PORTS ORGANISATION ASBL / VZW  
ORGANISATION DES PORTS MARITIMES EUROPEENS ASBL / VZW

# Content

1. ESPO and the environment
- 2. EU policy agenda**
3. ESPO initiatives
4. Conclusions



EUROPEAN SEA PORTS ORGANISATION ASBL / VZW  
ORGANISATION DES PORTS MARITIMES EUROPEENS ASBL / VZW

# EU policy agenda (1)

## ★ Ship emissions

- Sulphur Directive
- Measures GHG emissions of ships
- NECAs?

## ★ Review EU air quality policy

- Air quality Directive
- National Emissions Ceilings



EUROPEAN SEA PORTS ORGANISATION ASBL / VZW  
ORGANISATION DES PORTS MARITIMES EUROPEENS ASBL / VZW

## EU Policy agenda (2)

- ★ Review EU waste legislation
- ★ Review Environmental Impact Assessment Directive
- ★ Proposals on Maritime Spatial Planning and ICZM
- ★ EU climate change adaptation strategy





EUROPEAN SEA PORTS ORGANISATION ASBL / VZW  
ORGANISATION DES PORTS MARITIMES EUROPEENS ASBL / VZW

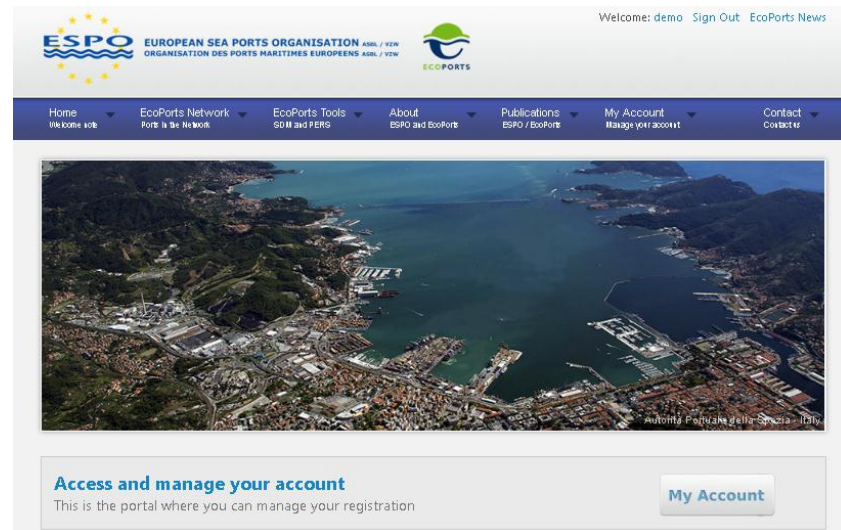
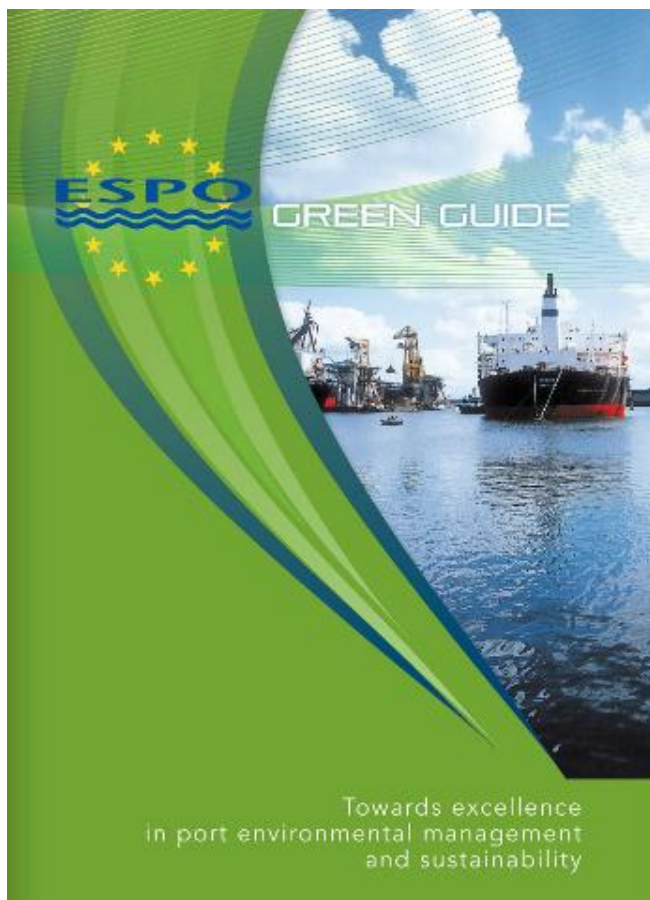
# Content

1. ESPO and the environment
2. EU policy agenda
- 3. ESPO initiatives**
4. Conclusions



EUROPEAN SEA PORTS ORGANISATION ASBL / VZW  
ORGANISATION DES PORTS MARITIMES EUROPEENS ASBL / VZW

# ESPO initiatives

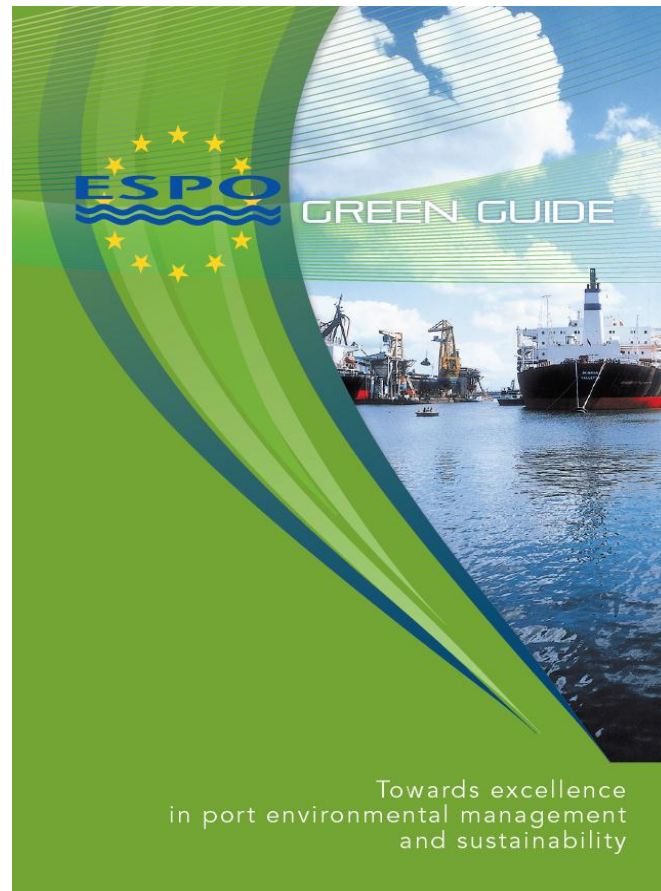
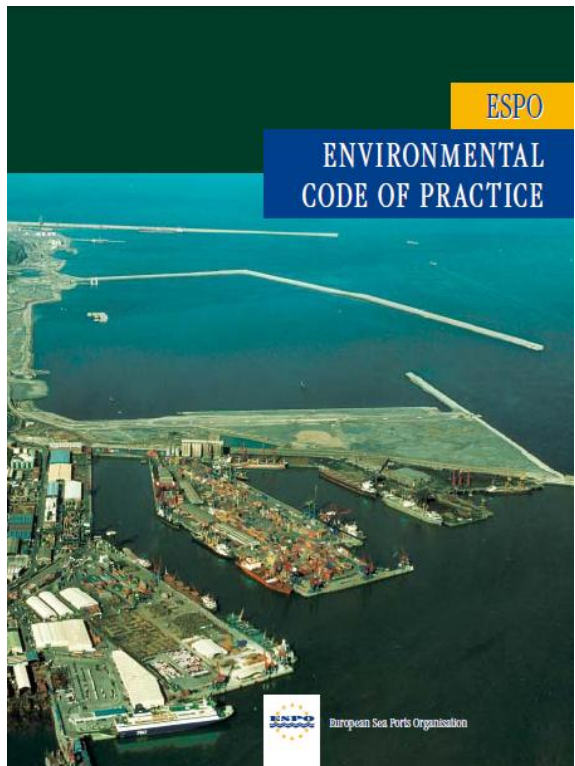




EUROPEAN SEA PORTS ORGANISATION ASBL / VZW  
ORGANISATION DES PORTS MARITIMES EUROPEENS ASBL / VZW

# ESPO Green Guide;

*Towards excellence in port environmental management and sustainability*







EUROPEAN SEA PORTS ORGANISATION ASBL / VZW  
ORGANISATION DES PORTS MARITIMES EUROPEENS ASBL / VZW

## We believe in



- ★ Voluntary self-regulation
- ★ Cooperating, sharing knowledge and experience
- ★ Serving in parallel the interests of the business and the local communities (license to operate)
- ★ Systematic approach to port environmental management
- ★ Being transparent in communicating and reporting





EUROPEAN SEA PORTS ORGANISATION ASBL / VZW  
ORGANISATION DES PORTS MARITIMES EUROPEENS ASBL / VZW

## We commit to focused action on 5Es

- ★ **Exemplifying**; Setting the good example when managing own operations
- ★ **Enabling**; Providing conditions that facilitate users and enable improved performance
- ★ **Encouraging**; Providing incentives to greener port users
- ★ **Engaging** with users and/or authorities in sharing knowledge and skills in joint projects
- ★ **Enforcing**; Setting rules and ensuring compliance

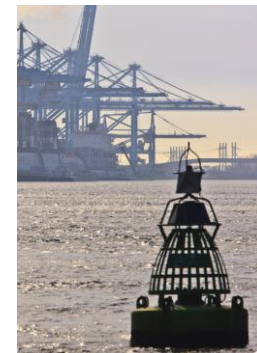




**EUROPEAN SEA PORTS ORGANISATION** ASBL / VZW  
**ORGANISATION DES PORTS MARITIMES EUROPEENS** ASBL / VZW

# We apply the 5 Es on 5 top priorities

- ★ Air quality
- ★ Energy conservation and climate change
- ★ Noise management
- ★ Waste management
- ★ Water management



	1996	2004	2009
1	Port development (water)	Garbage / Port waste	Noise
2	Water quality	Dredging: operations	Air quality
3	Dredging disposal	Dredging disposal	Garbage / Port waste
4	Dredging: operations	Dust	Dredging: operations
5	Dust	Noise	Dredging: disposal
6	Port development (land)	Air quality	Relationship with local community
7	Contaminated land	Hazardous cargo	Energy consumption
8	Habitat loss/degradation	Bunkering	Dust
9	Traffic volume	Port development (land)	Port development (water)
10	Industrial effluent	Ship discharge (bilge)	Port development (land)

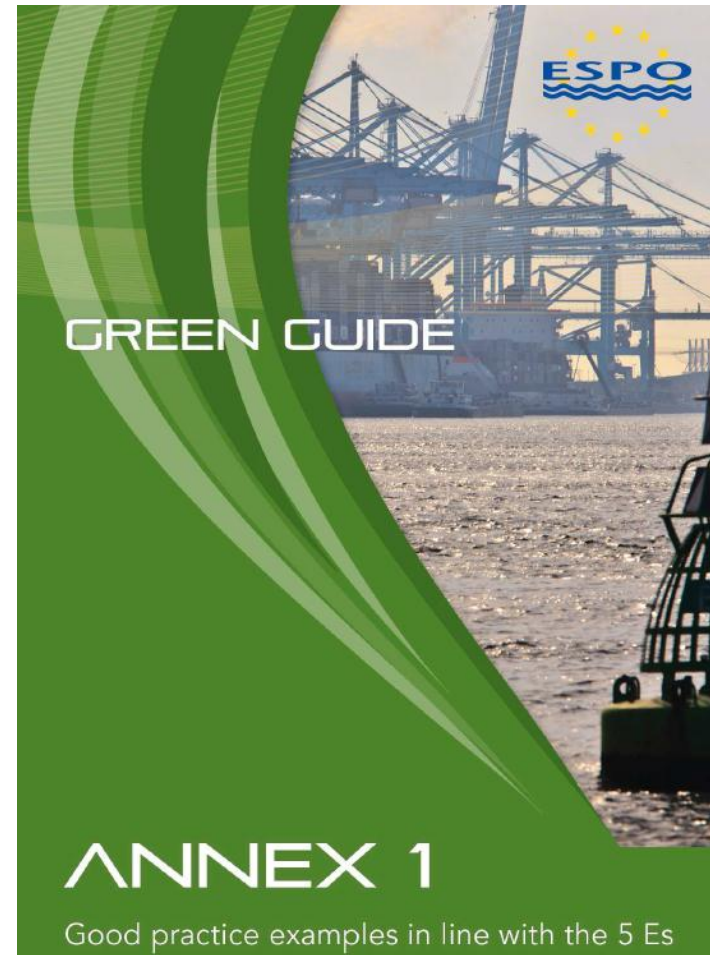


EUROPEAN SEA PORTS ORGANISATION ASBL / VZW  
ORGANISATION DES PORTS MARITIMES EUROPEENS ASBL / VZW

# Annex 1 - Good practice examples

- ★ Dynamic
- ★ Version 1
- ★ 70 contributions
- ★ 23 ports
- ★ 11 countries
- ★ Open call for contributions \*

**[www.espo.be](http://www.espo.be)**







**EUROPEAN SEA PORTS ORGANISATION** ASBL / VZW  
**ORGANISATION DES PORTS MARITIMES EUROPEENS** ASBL / VZW

# Exemplify

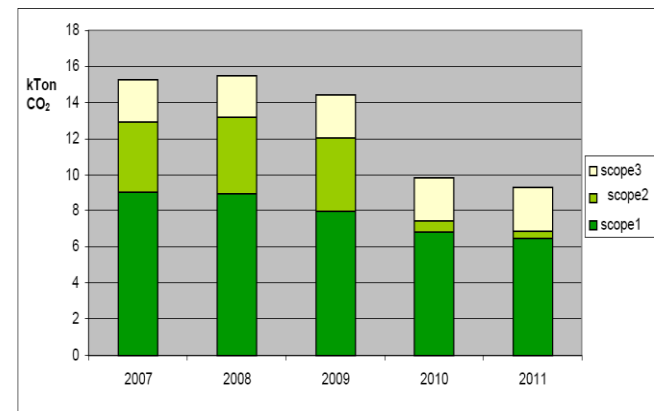
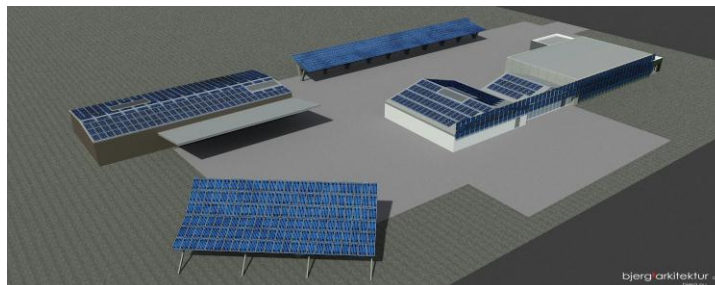
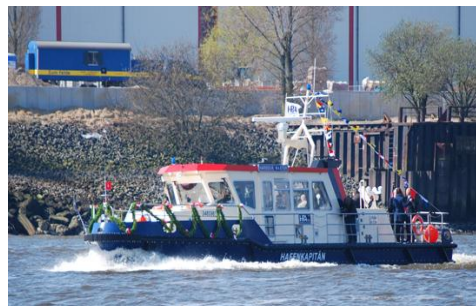


Figure 1: Total CO<sub>2</sub>-emissions of scope 1, 2 and (limited) 3 activities over the period 2007- 2011

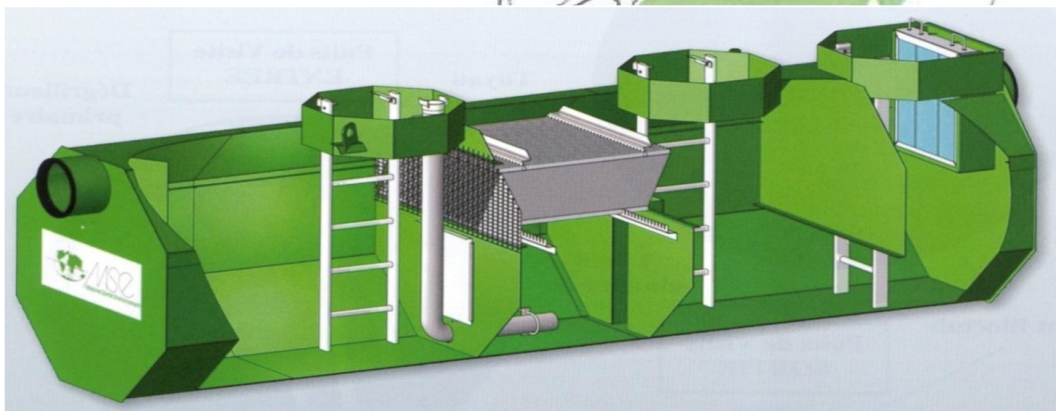
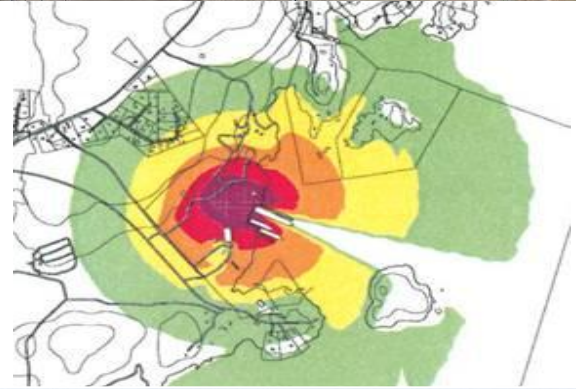




**EUROPEAN SEA PORTS ORGANISATION** ASBL / VZW  
**ORGANISATION DES PORTS MARITIMES EUROPEENS** ASBL / VZW



# Enable







**EUROPEAN SEA PORTS ORGANISATION** ASBL / VZW  
**ORGANISATION DES PORTS MARITIMES EUROPEENS** ASBL / VZW

# Encourage



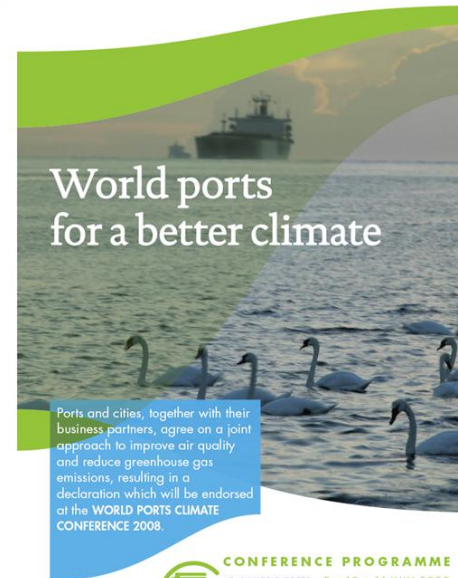
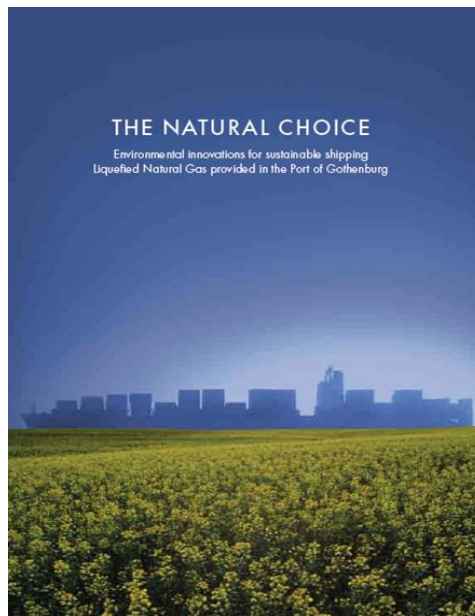
Environmental Ship Index ESI

**World  
Ports  
Climate  
Initiative**



**EUROPEAN SEA PORTS ORGANISATION** ASBL / VZW  
**ORGANISATION DES PORTS MARITIMES EUROPEENS** ASBL / VZW

# Engage



## CONFERENCE PROGRAMME

C40 WORLD PORTS  
CLIMATE CONFERENCE  
ROTTERDAM 2008

10 • 11 JULY 2008  
DE DOELEN, ROTTERDAM  
THE NETHERLANDS

THIS CONFERENCE WILL BE CARBON NEUTRAL

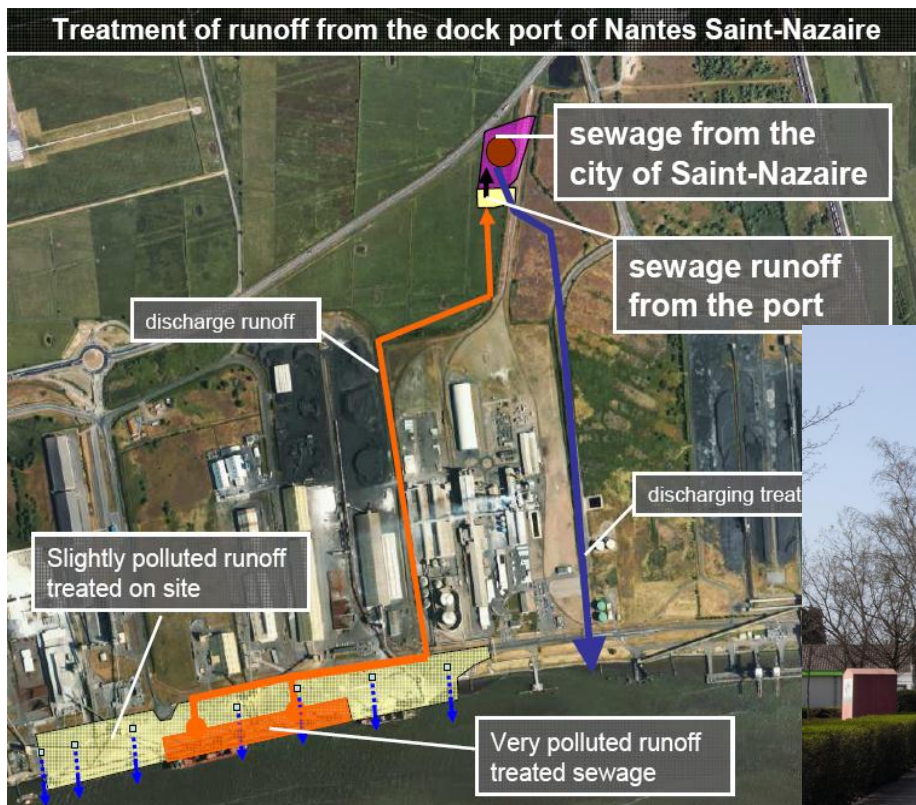






EUROPEAN SEA PORTS ORGANISATION ASBL / VZW  
ORGANISATION DES PORTS MARITIMES EUROPEENS ASBL / VZW

and as a last resort ... Enforce







**EUROPEAN SEA PORTS ORGANISATION** ASBL / VZW  
**ORGANISATION DES PORTS MARITIMES EUROPEENS** ASBL / VZW

# Foreword by the European Commision

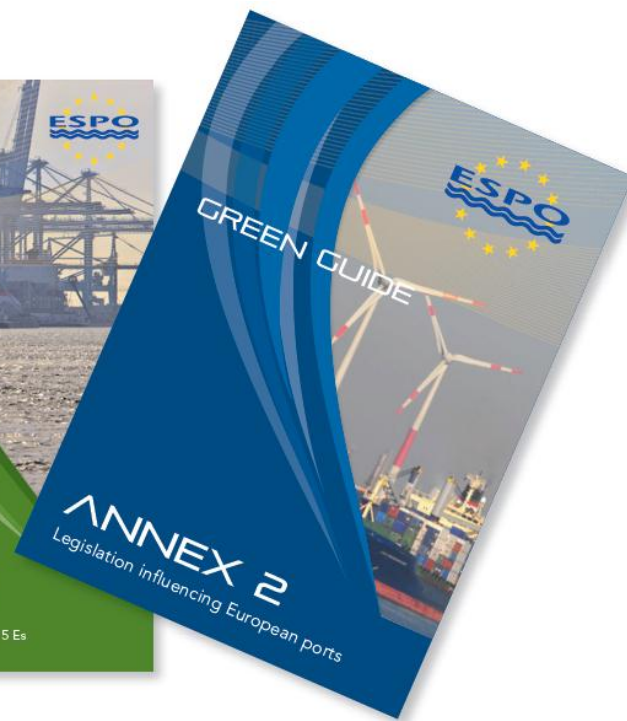
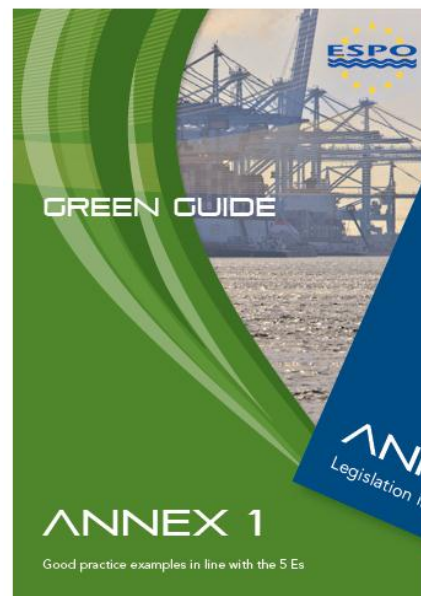
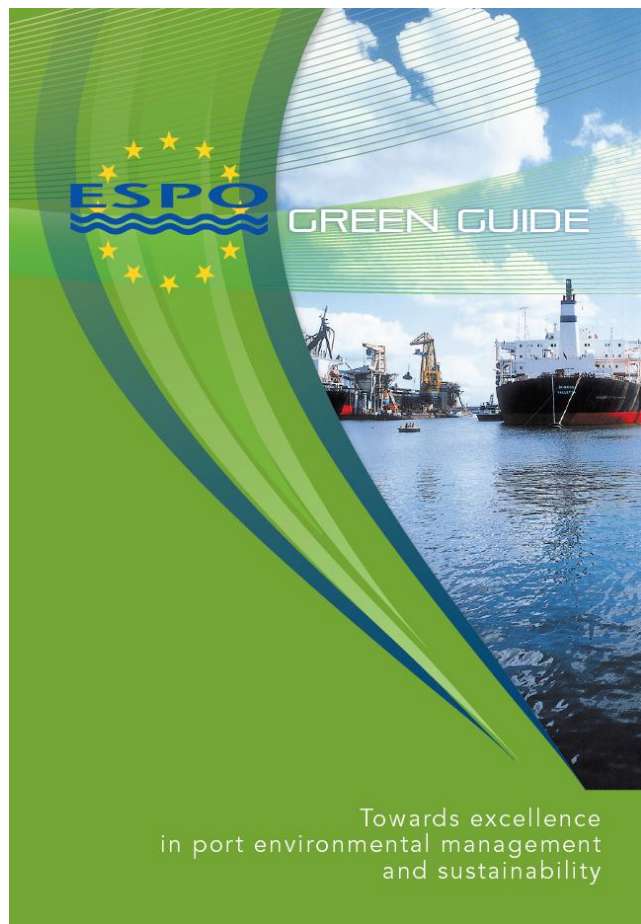
The application of the 5 Es (Exemplify, Enable, Encourage, Engage and Enforce) is showing the way towards a comprehensive and integrated approach. The Commission appreciates ESPO's approach in assisting ports to implement the relevant EU rules rigorously and is following this initiative with great interest.

Siim Kallas  
Vice-President of the European Commission  
In charge of Transport





**EUROPEAN SEA PORTS ORGANISATION** ASBL / VZW  
**ORGANISATION DES PORTS MARITIMES EUROPEENS** ASBL / VZW



[www.espo.be](http://www.espo.be) / [www.ecoports.com](http://www.ecoports.com)



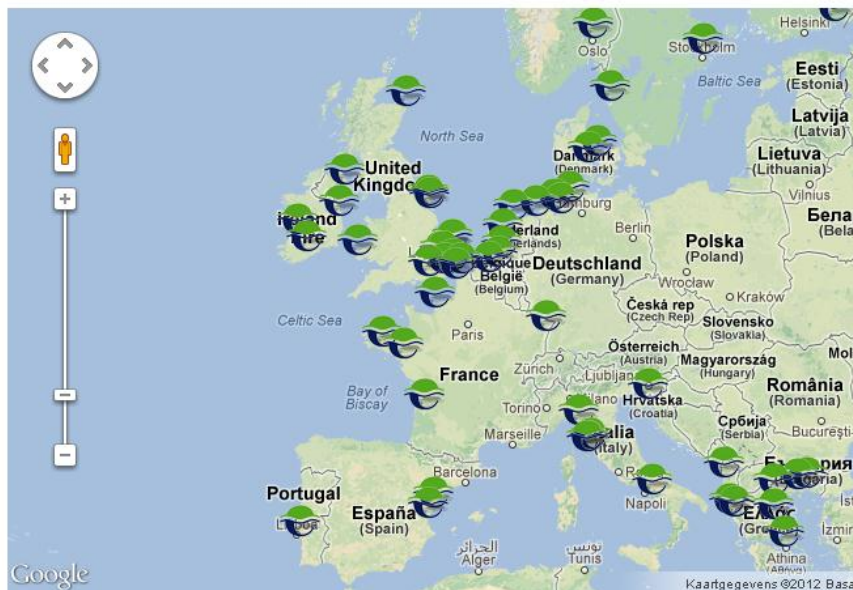


**EUROPEAN SEA PORTS ORGANISATION** ASBL / VZW  
**ORGANISATION DES PORTS MARITIMES EUROPEENS** ASBL / VZW

# EcoPorts - an integral part of ESPO

## Welcome to the EcoPorts network

This page provides visibility and credit to ports that are currently part of the Network through the interactive map and the list below. The "EcoPort" status is obtained by any port within the broad ESPO membership upon completion of a Self Diagnosis Method (SDM) checklist. The port is awarded in that way for providing data on the performance of its environmental management programme and for contributing in such way to the up-to-date maintenance of the ESPO European Benchmark of performance. Additional credit is provided to ports that are certified with PERS, the only port-sector specific environmental management standard, and ISO 14001.



[www.ecoport.com](http://www.ecoport.com)

## Access and manage your account

This is the portal where you can manage your registration

[My Account](#)





EUROPEAN SEA PORTS ORGANISATION ASBL / VZW  
ORGANISATION DES PORTS MARITIMES EUROPEENS ASBL / VZW

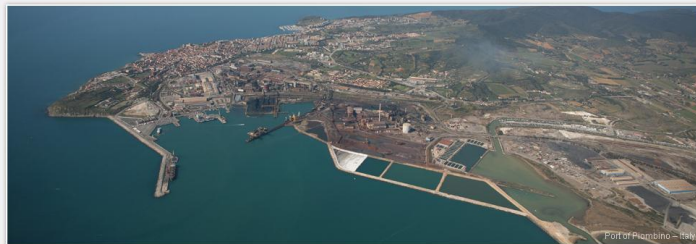
# Visibility

Welcome to the EcoPorts network

This page provides visibility and credit to ports that are currently part of the Network through the interactive map and the list below. The "EcoPort" status is obtained by any port membership upon completion of a Self Diagnosis Method (SDM) checklist. The port is awarded in that way for providing data on the performance of its management programme and for contributing in such way to the up-to-date maintenance of the ESPO European Benchmark of performance. Additional credit is granted to ports certified with PERS, the only port-sector specific environmental management standard, and ISO 14001.



Home Welcome note EcoPorts Network Ports in the Network EcoPorts Tools SDM and PERS About ESPO and EcoPorts Publications ESPO / EcoPorts Join Now Join the network Contact Contact us



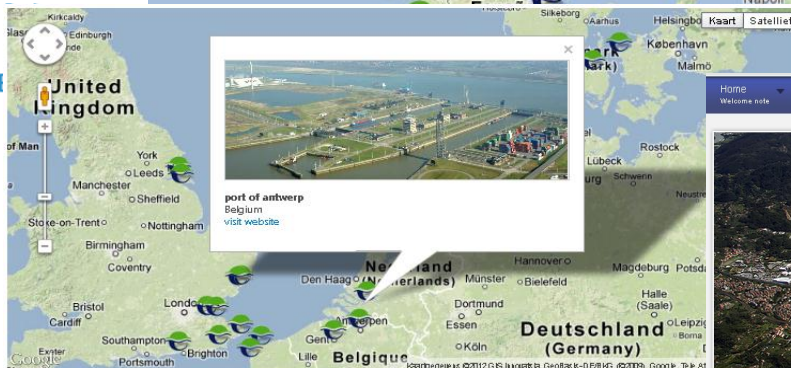
## Latest EcoPorts

Port of Oslo - Norway  
Nov 23, 2012

Port of Amsterdam - Netherlands  
Oct 5, 2012

Autorità Portuale della Spezia -  
Sep 27, 2012

PORT DE COMMERCE DE LORIENT



Home Welcome note EcoPorts Network Ports in the Network EcoPorts Tools SDM and PERS About ESPO and EcoPorts Publications ESPO / EcoPorts Join Now Join the network Contact Contact us





# Self Diagnosis Method (SDM)

Gap Analysis:		PERS 60.71%	ISO 48.68%	Answers	SWOT	ANS(%)	YES(%)	NO(%)
A.1	Does the Port have an Environmental Policy?				S1	100,0%	87,8%	12,2%
A.2	IF YES,Is the Policy signed by Chief Executive / Senior Management?				S2	89,8%	90,9%	9,1%
A.3	IF YES,Is the Policy communicated to all relevant stakeholders?				S3	89,8%	88,6%	11,4%
A.4	IF YES,Is the policy communicated to all employees?				O1	89,8%	84,1%	15,9%
A.5	IF YES,Is the policy publicly available on the Port's Website?				O2			
A.6	Does the Policy include reference to:Major objectives?				S4	89,8%	90,9%	9,1%
A.7	Does the Policy include reference to:Publication of an Environmental Report?				O3	87,8%	65,1%	34,9%
A.8	Does the Policy include reference to:The identification and control of the port's Significant Environmental Aspects?				S5			
A.9	Does the Policy include reference to:Continual improvement?				S6	89,8%	93,2%	6,8%
A.10	Does the Policy include reference to:Prevention of pollution?				S7	73,5%	86,1%	13,9%
A.11	Does the Policy include reference to:Training employees in environmental issues?				O4	89,8%	75,0%	25,0%



EUROPEAN SEA PORTS ORGANISATION ASBL / VZW  
ORGANISATION DES PORTS MARITIMES EUROPEENS ASBL / VZW

# Port Environmental Review System (PERS)





# Sector - Positive trends!



\* Data for 2012  
originates from SDM

Environmental Management component	1996 %	2004 %	2009 %	2012 %	Percentage change (2004-2012)
Does the port authority have an environmental policy?	45	58	72	91	+33
Is the policy made available to the public?	-	59	62	85	+26
Does the policy aim to improve environmental standards beyond those required under legislation?	32	49	58	73	+24
Does the port publish an annual environmental review or report?	-	31	43	62	+31
Does the port have designated environmental personnel?	55	67	69	95	+28
Does the port have an environmental management system?	-	21	48	62	+41
Is environmental monitoring carried out in the port?	53	65	77	80	+15
Has your port identified environmental indicators to Monitor trends in environmental performance?	-	48	60	71	+23





EUROPEAN SEA PORTS ORGANISATION ASBL / VZW  
ORGANISATION DES PORTS MARITIMES EUROPEENS ASBL / VZW

# Content

1. ESPO and the environment
2. EU policy agenda
3. ESPO initiatives
4. **Conclusions**



EUROPEAN SEA PORTS ORGANISATION ASBL / VZW  
ORGANISATION DES PORTS MARITIMES EUROPEENS ASBL / VZW

# Conclusions

- ★ Proactive voluntary self-regulation  
(Green Guide, 5 Es)
- ★ EcoPorts Tools – proven systematic approach to EMS
- ★ Port sector - Evidence of positive trends
- ★ Working together, sharing knowledge and experiences





**EUROPEAN SEA PORTS ORGANISATION** ASBL / VZW  
**ORGANISATION DES PORTS MARITIMES EUROPEENS** ASBL / VZW

***Self-regulation***

***Environmental  
Improvement***

***Environmental  
collaborative projects***

***Implementation ESPO Green Guide***





**EUROPEAN SEA PORTS ORGANISATION** ASBL / VZW  
**ORGANISATION DES PORTS MARITIMES EUROPEENS** ASBL / VZW

# Thank you for your attention!



Dr Antonis Michail, Policy Advisor, ESPO

[antonis.michail@espo.be](mailto:antonis.michail@espo.be)

[www.espo.be](http://www.espo.be) / [www.ecoport.com](http://www.ecoport.com)